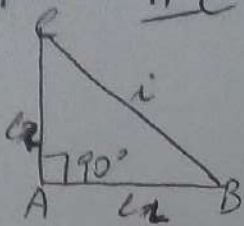


CONSOLIDAMENTO

PROBLEMA GUIDA PAG 94 n° 38

17/03 TIC



$$A = \frac{b \times h}{2} = \frac{c_1 \times c_2}{2}$$

$$P = \overline{AB} + \overline{BC} + \overline{CA} \\ c_1 + c_2 + c$$

DATI

$$A = 13,86 \text{ cm}^2$$

$$\overline{AB} = 7,7 \text{ cm}$$

INCOGNITE

$$P = ?$$

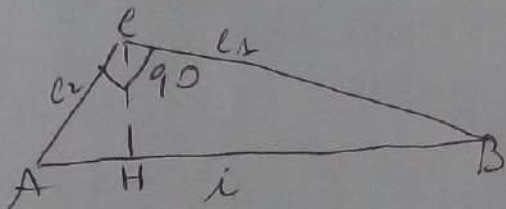
$$\overline{AC} = \frac{A \times 2}{\overline{AB}} = \frac{13,86 \times 2}{7,7} = 3,6 \text{ cm}$$

$$\overline{BC} = \sqrt{\overline{AB}^2 + \overline{AC}^2} = \sqrt{7,7^2 + 3,6^2} = \sqrt{59,29 + 12,96} = \sqrt{72,25} = 8,5 \text{ cm}$$

$$P = \overline{AB} + \overline{BC} + \overline{CA} = 7,7 + 8,5 + 3,6 = 19,8 \text{ cm}$$

DA SVOLGERE n° 39

PROBLEMA GUIDA PAG 94 n° 40



DATI

$$A = 29,04 \text{ cm}^2$$

$$\overline{CB} = 8,8 \text{ cm}$$

INCOGNITE

$$\overline{CH} = ?$$

$$P = ?$$

$$\overline{AB} = \frac{A \times 2}{\overline{CB}} = \frac{29,04 \times 2}{8,8} = 6,6 \text{ cm}$$

$$\overline{AC} = \sqrt{\overline{AB}^2 + \overline{CB}^2} = \sqrt{6,6^2 + 8,8^2} = \sqrt{43,56 + 77,44}$$

$$\sqrt{121} = 11 \text{ cm}$$

$$P = \overline{AB} + \overline{BC} + \overline{CA} = 11 + 8,8 + 6,6 = 26,4 \text{ cm}$$

$$\overline{CH} = \frac{A \times 2}{\overline{AB}} = \frac{29,04 \times 2}{11} = \frac{58,08}{11} = 5,28 \text{ cm}$$

DA SVOLGERE n° 41-42