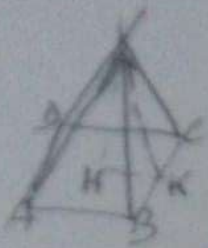


PROBLEMA GUIDA CONSOLIDAMENTO

17/03



FORMULE

$$AG = \overline{AB} \times \overline{AB} \rightarrow \overline{AB} = \sqrt{AG}$$

$$AL = \frac{PG \times \sqrt{K}}{2}$$

$$At = (AG \times 2) + AL$$

$$V = \frac{AG \times \sqrt{H}}{3}$$

$$PG = AB \times 4 \rightarrow \overline{AB} = \frac{PG}{4}$$

DATI
 $\overline{AB} = 21 \text{ cm}$
 $\sqrt{H} = 14 \text{ cm}$
 Incolante
 $At = ?$ $V = ?$

SVOLGIMENTO

$$\overline{HK} = \frac{AB}{2} = 21 : 2 = 10,5 \text{ cm}$$

$$\sqrt{K} = \sqrt{\overline{HK}^2 + \sqrt{H}^2} = \sqrt{10,5^2 + 14^2} = \sqrt{110,25 + 196} = \sqrt{306,25} = 17,5$$

$$PG = AB \times 4 = 21 \times 4 = 84 \text{ cm}$$

$$AG = \overline{AB} \times \overline{AB} = 21 \times 21 = 441 \text{ cm}^2$$

$$AL = \frac{PG \times \sqrt{K}}{2} = \frac{84 \times 17,5}{2} = 735 \text{ cm}^2$$

$$At = (AG \times 2) + AL = (441 \times 2) + 735 = 1617 \text{ cm}^2$$

$$V = \frac{AG \times \sqrt{H}}{3} = \frac{441 \times 14}{3} = 2058 \text{ cm}^3$$

PROBLEMI DA SVOLGERE
CONSOLIDAMENTO

1) DATI
 $PG = 108 \text{ cm}$
 $\sqrt{H} = 18 \text{ cm}$
 INCOLANTE
 $At = ?$
 $V = ?$

2) $AG = 324 \text{ cm}^2$ $At = ?$
 $\sqrt{K} = 41 \text{ cm}$ $V = ?$