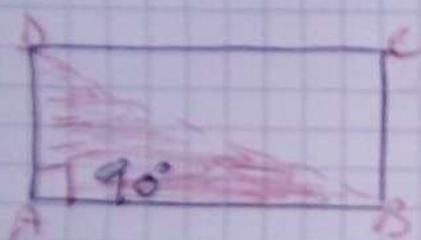


APPLICAZIONE DEL T.P. AL RETTANGOLO
PROBLEMA GUIDA



$$P = (\overline{AB} + \overline{BC}) \times 2$$

$$A = \overline{AB} \times \overline{BC}$$

$$d = \overline{DB} = \sqrt{\overline{AB}^2 + \overline{AD}^2}$$

$$P = (\overline{AB} + \overline{AD}) \times 2 = (70 + 24) \times 2 = 94 \times 2 = 108 \text{ cm}$$

$$A = \overline{AB} \times \overline{AD} = 70 \times 24 = 1680 \text{ cm}^2$$

$$\overline{AD} = \sqrt{\overline{AB}^2 + \overline{AD}^2} = \sqrt{70^2 + 24^2} = \sqrt{4900 + 576} =$$

$$\sqrt{5476} = 74 \text{ cm}$$

DATI

$$\overline{AB} = 70 \text{ cm}$$

$$\overline{AD} = 24 \text{ cm}$$

RICHIESTE

$$P = ?$$

$$A = ?$$

$$\overline{DB} = ?$$

PROBLEMI DA SVOLGERE PAG 101 n° 112 -

113 - 114, CALCOLANDO PERIMETRO

AREA E DIAGONALE COME IL

PROBLEMA GUIDA