

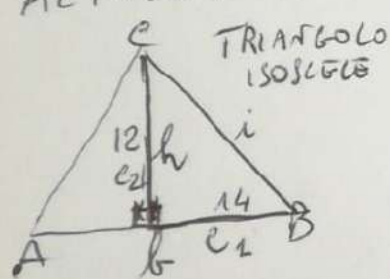
102) a)  $\frac{7}{12} - \frac{1}{3} + \frac{5}{6} =$  b)  $\frac{4}{3} - \frac{3}{5} + \frac{4}{15} =$  c)  $\frac{6}{5} - \frac{3}{4} + \frac{3}{10} =$

113)  $\frac{6}{5} - \left(\frac{1}{1} + \frac{3}{4} - \frac{4}{5}\right) =$

114)  $\frac{5}{4} + \left(\frac{5}{6} + \frac{1}{3}\right) + \frac{1}{12} - \left(\frac{5}{6} + \frac{2}{3}\right) =$

GEOMETRIA : PROBLEMA GUIDA

LA BASE DI UN TRIANGOLO MISURA 28 cm E LA SUA ALTEZZA 12 cm. CALCOLA L'AREA E IL PERIMETRO



DATI  
 $\overline{AB} = 28 \text{ cm}$   
 $\overline{CH} = 12 \text{ cm}$

INCOGNITE  
 $A = ?$   
 $P = ?$

$A = \frac{\overline{AB} \times \overline{CH}}{2} = \frac{28 \times 12}{2} = 168 \text{ cm}^2$

$\overline{HB} = \frac{\overline{AB}}{2} = \frac{28}{2} = 14 \text{ cm}$

$\overline{AC} = \overline{BC} = \sqrt{c_1^2 + c_2^2} = \sqrt{14^2 + 12^2} = \sqrt{196 + 144} = \sqrt{340} = 18,44 \text{ cm}$

$P = (\overline{AC} \times 2) + \overline{AB} = (18,44 \times 2) + 28 = 36,88 + 28 = 64,88 \text{ cm}$

PROBLEMI DA RISOLVERE

1) DATI  
 $\overline{AB} = 32 \text{ cm}$   
 $\overline{CH} = 15 \text{ cm}$

INCOGNITE  
 $P = ?$   
 $A = ?$

2)  $\overline{AB} = 36 \text{ cm}$   
 $\overline{CH} = 15 \text{ cm}$

$P = ?$   
 $A = ?$